



# Detectable WARNING PLATES

*Wears Like Iron Because it is Iron!*

Exceptional Durability • Superior Performance • Simple Installation

NEENAH



FOUNDRY



# Withstand Even the Harshest of Weather Conditions

Regulatory-compliant cast iron Detectable Warning Plates from Neenah Foundry offer appealing aesthetics, exceptional longevity and freedom from maintenance. By using Neenah's Detectable Warning Plates, specifiers can be confident that the critical warning message will be delivered for the lifetime of the installation.

## Neenah's Detectable Warning Plates offer:

### Exceptional Durability & Superior Performance

- Combine the exceptional durability of cast iron and its ability to adhere to concrete
- Eliminate maintenance problems that are associated with the wearing, peeling, cracking and delaminating of non-iron materials

### Superior Performance

- Durability of cast iron even withstands snow plow abuse
- They look like new for many years to come
- There just isn't a more durable, long-term product available

### Simple Installation

- Can be installed in minutes into prepared concrete
- Reusable lifting springs simplify the installation process

### Specifications

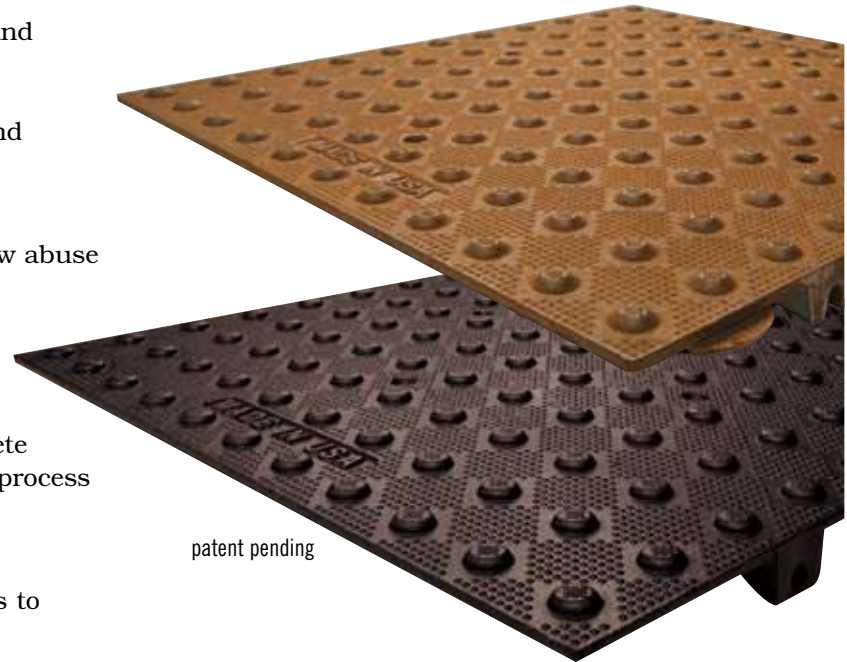
- Qualified design professionals can effectively use Neenah's detectable warning plates in their plans to meet current ADA and ABA guidelines

### Aesthetic Appeal

- Recommended to be furnished and installed in their natural unpainted state for best long-term, maintenance-free performance and aesthetic appeal
- Unpainted plates will develop a permanent patina that will remain the same throughout their lifetime
- Powder coat paint is available upon request. Most common colors are federal yellow, dark gray and brick red.

## Coefficient of Friction

Excellent non-skid characteristics comply with all ADA and ABA guidelines. The measured coefficient of friction is 0.9.



## Neenah Recommends Unpainted Plates

Upon exposure to moisture, the cast iron plates will form a temporary iron oxide scale, which is a normal part of the oxidation process. Following this, your warning plate will darken to a patina, which is permanent throughout the life of the installation. Look at manhole covers in the street to see how the color matures.

## Features & Benefits

### Wears like iron because it is iron!

Lasting form and function — we have never had one fail

Installations with natural finish are maintenance-free

Highly resistant to snow plow and shovel damage

Lasting non-skid properties

Excellent cast iron to concrete adhesion properties

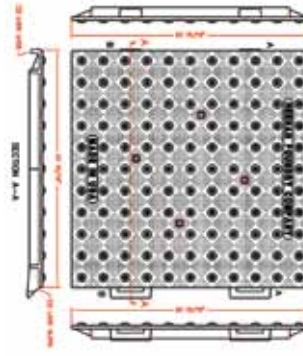
No need for replacement features — our plates are permanent

5-yr limited warranty

Vent holes release gasses and air for maximum concrete contact

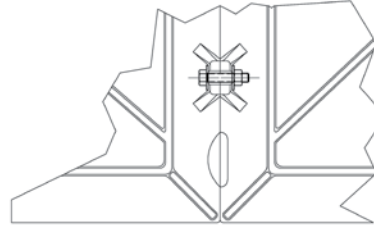
Furnished lifting brackets simplify installation

Can cover long runs using radius or straight sections



### Quick Connect Plates

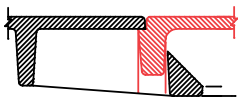
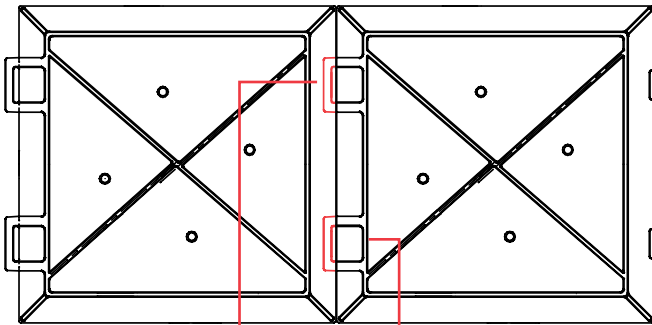
| Depth | Width | Catalog No. |
|-------|-------|-------------|
| 24"   | x 24" | 4984-24Q    |
| 24"   | x 30" | 4984-30Q    |



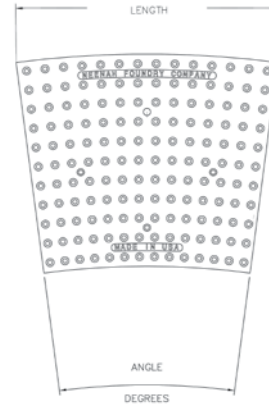
### Bolted Plates

| Depth | Width | Catalog No. |
|-------|-------|-------------|
| 24"   | x 24" | 4984-24B    |
| 24"   | x 30" | 4984-30B    |
| 24"   | x 36" | 4984-36B    |

## Technical Features



Precision casting provides level seaming between plates



### Radius Plates

| Depth | Radius | Catalog No. |
|-------|--------|-------------|
| 24"   | 9' 5"  | 4984-9-5R   |
| 24"   | 15'    | 4984-15R    |
| 24"   | 20'    | 4984-20R    |
| 24"   | 25'    | 4984-25R    |
| 24"   | 30'    | 4984-30R    |
| 24"   | 35'    | 4984-35R    |

## Guidelines for Accessible Rights-of-Way

The ADA and ABA have specific guidelines that refer to numerous issues concerning detectable warning. Neenah Foundry's Detectable Warning Plates help you meet these requirements.

Neenah recommends that specifiers review prevailing national, state and local guidelines to ensure full compliance.

### TROUBLE-FREE INSTALLATION

- Plates easily set in wet concrete
- Integral lugs ensure solid attachment
- Cap head screws can be added for extra anchorage
- Reusable spring lifting clips included

### PREMIUM MATERIAL

- Low-maintenance cast gray iron
- Excellent wear resistance — virtually indestructible
- Cast iron far outlasts competitive substances
- Natural patina provides ample visual contrast

# Installation

Installing Neenah Foundry Detectable Warning Plates is quick and easy. In just a few minutes, you can install the plates in any number of configurations.



## Installation Steps

- 1 If necessary, connect multiple plates together.
- 2 Pour concrete.
- 3 Use supplied lifting springs and a construction 2x4 or pipe to lift plates into position.
- 4 Set plates in wet concrete at final position.
5. Remove lifting springs.
- 6 Press assembly into wet concrete to final elevation.
7. Finish concrete around assembly
8. Remove any wet concrete that may have spilled on to the plate surface.



Watch the complete installation video online in the Detectable Warning Plates section at [neenahfoundry.com](http://neenahfoundry.com).



### AVAILABLE OPTIONS

- Radial plate sections available
- Variety of sizes

### MADE IN USA

- Ensures acceptability with federally funded projects

Neenah Foundry Detectable Warning Plates are the most durable and effective product of their kind. They wear like iron because they are iron. When you specify detectable warning plates for your community, we encourage you to consider the following:

## Suggested Specifications

### General

Detectable warnings shall be an integral part of the ramp and comply with section 4.29 of the ADA Accessibility Guidelines and section 705\* of the 2010 ADA standards for accessible design.

### Dome Size (4.29.2 and 705.1.1\*)

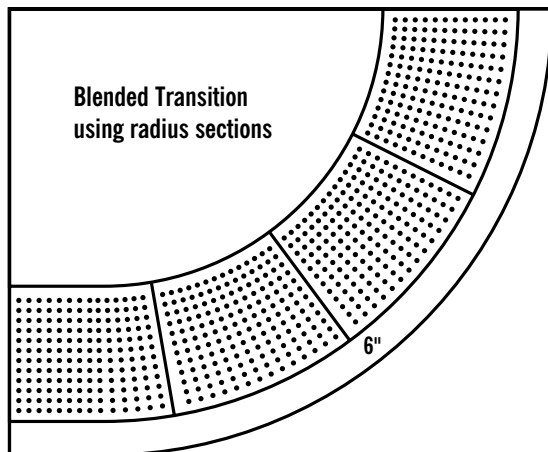
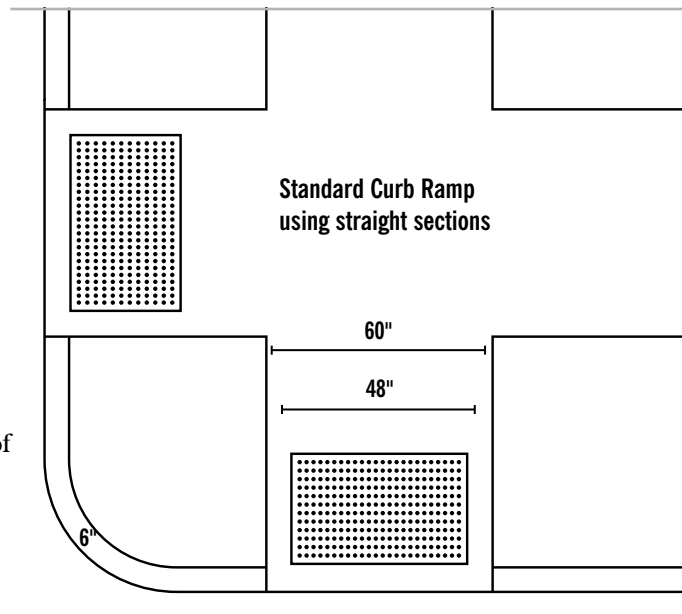
Truncated domes in detectable warning surface shall have a base diameter of 0.9 inch (23 mm) minimum and 1.4 inches (36 mm) maximum, a top diameter of 50 percent of the base diameter minimum, to 65 percent of the base diameter maximum, and a height of 0.2 inch (5.1 mm).

### Dome Spacing (4.29.2 and 705.1.2\*)

Truncated domes in a detectable warning surface shall have a center-to-center spacing of 1.6 inches (41 mm) minimum and 2.4 inches (61 mm) maximum, and a base-to-base spacing of 0.65 inch (17 mm) minimum, measured between the most adjacent domes on a square grid.

### Contrast (4.29.2 and 705.1.3\*)

Detectable warning surfaces shall contrast visually with adjacent walking surfaces — either light-on-dark, or dark-on-light.



### Platform Edges (4.29.2 and 705.2\*)

Detectable warning surfaces at platform boarding edges shall be 24 inches (610 mm) wide and shall extend the full length of the public use areas of the platform.

### Materials

Cast gray iron conforming to ASTM A-48 class 30A minimum.

\*Effective March 15, 2012

## 5-YEAR WARRANTY

All Neenah Foundry Detectable Warning Plates come with a 5-year limited warranty. Contact your Neenah Foundry representative for details.

Since 1872, Neenah Foundry has been known for consistent quality, functional performance and design aesthetics. We're also proud of our reputation for responsive support and service. When you choose Neenah Foundry, you choose the best.

Neenah offers an extensive selection of castings for construction and municipal use including manhole covers and frames, catch basins and curb inlets, cast iron downspouts, airport and port castings, bridge scuppers and many other specialty products.

Call us at 800-558-5075 or visit [www.neenahfoundry.com](http://www.neenahfoundry.com) to order your 14th Edition Construction Catalog, to locate your local representative and to learn more about our products.



In support of the Green Initiative, Neenah Foundry is pleased to report that our products contain a minimum of 85% recycled content in the form of a minimum of 35% consumer-generated scrap metal and a minimum of 50% industrial-generated scrap metal.



Neenah Foundry Company  
Box 729, Neenah, Wisconsin 54957-0729  
800-558-5075 | [www.neenahfoundry.com](http://www.neenahfoundry.com)  
920-725-7000 | Fax: 920-729-3661

These products are to be specified and used under the guidance of qualified design professionals.



Neenah Foundry Co. is a subsidiary of

